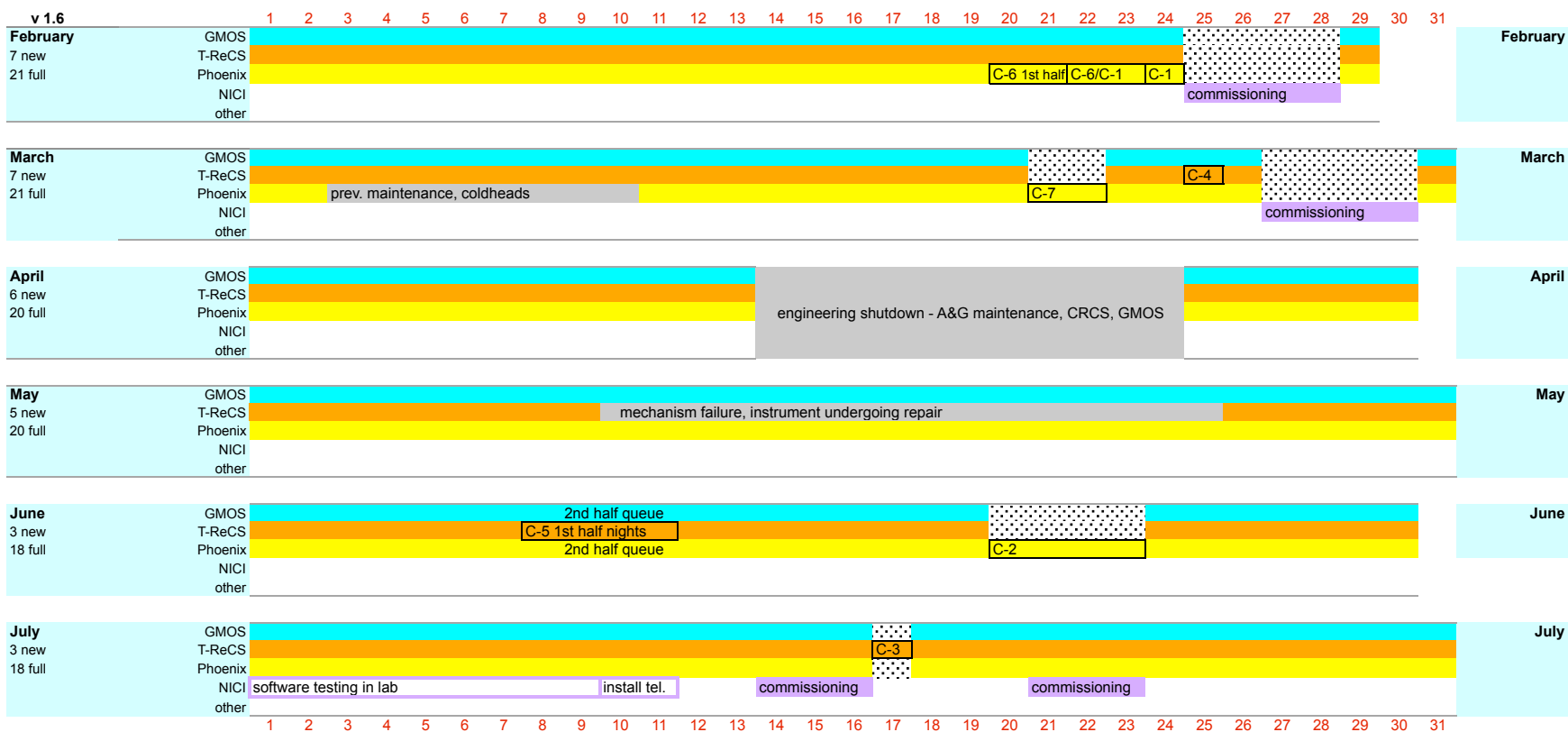


Gemini South Semester 2008A

The semester calendar shows multi-instrument queue nights, scheduled classical runs and engineering or commissioning blocks. Instruments potentially usable on queue nights are indicated by the coloured-horizontal bands (see color key below). Note: ToO PIs should always check the "what's available now" pages that are linked from the contents list for the most up-to-date information. Scheduled classical runs are indicated by the instrument name (or an abbreviated version) and the last characters of the GS-2008A-... program ID number. Engineering or commissioning that involves one or more instruments is shown in the relevant instrument row(s). New and full moon dates are shown.

Key:

GMOS	T-ReCS	engineering
Phoenix	NICI	queue backup



Classically scheduled time is indicated with "C-x" referring to the program id, e.g., "C-2" refers to GS-2008A-C-2. All classical time has queue backup scheduled.
 NICI notes: NICI commissioning and campaign science blocks are tentative and may be re-scheduled as needed. It is expected that NICI will be mounted on a side port, and so will not require removal of T-ReCS.
 Laser commissioning in preparation for the Gemini MCAO System may occur late in the semester, exact dates are to be determined.

Last updated 22-May-2008, B. Rodgers