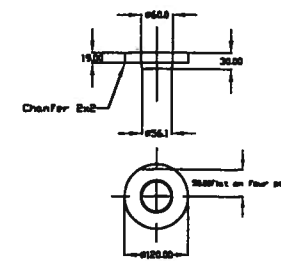
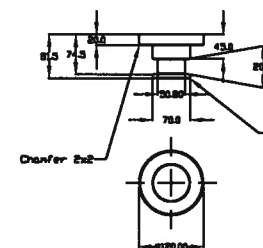
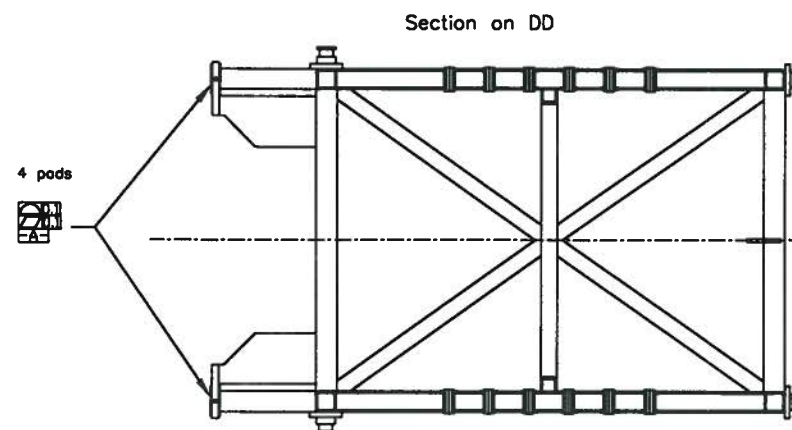
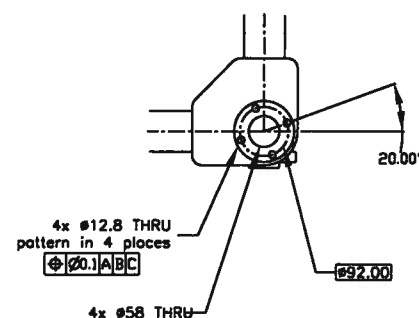
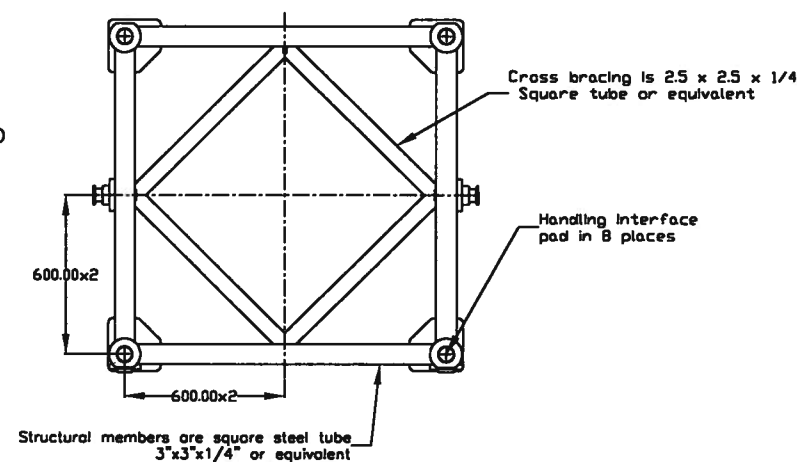
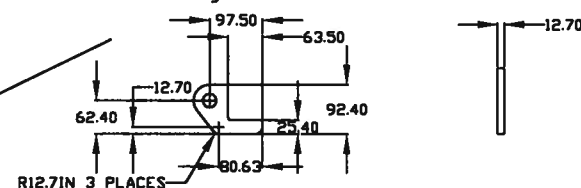
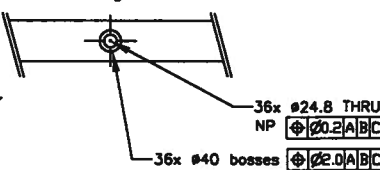
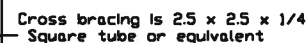
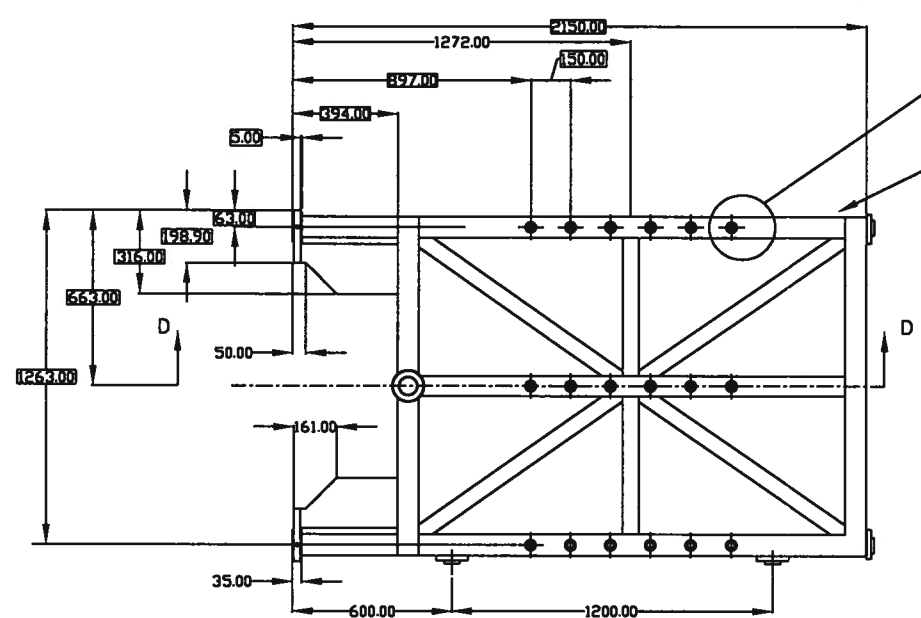
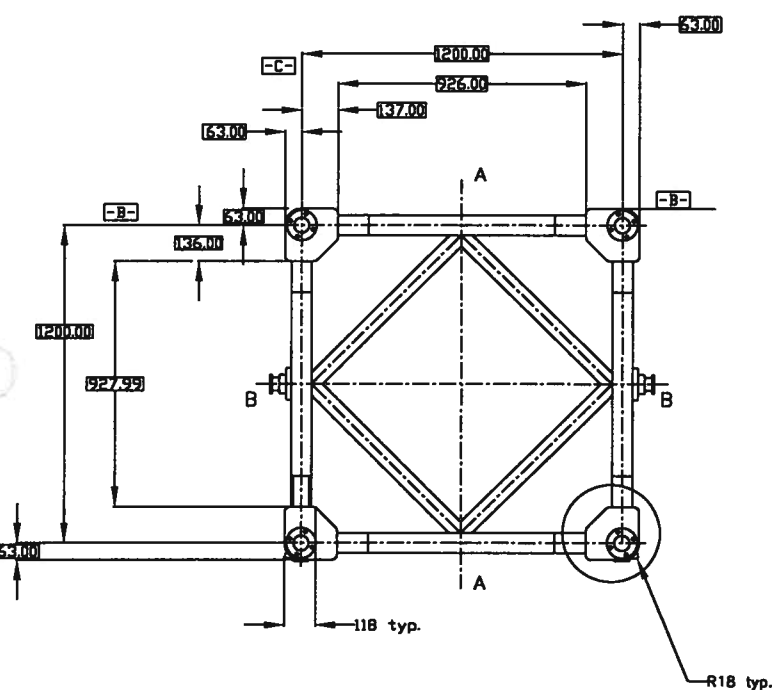
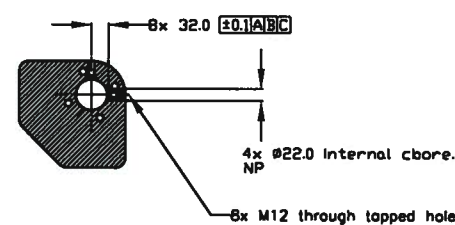
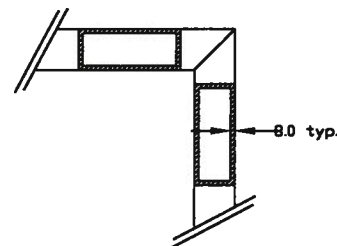


Port section on CC x 2

Port section on EE x 2



Finish point all surfaces as described in workscope masking all topped holes, machined holes and surfaces marked 'NP'. These surfaces must be protected by a thin film lubricant.

Note5. Mass estimate 578 Kg. (see sheet 2)

GEMINI PROJECT DOCUMENT  
APPROVED FOR RELEASE

[illegible]