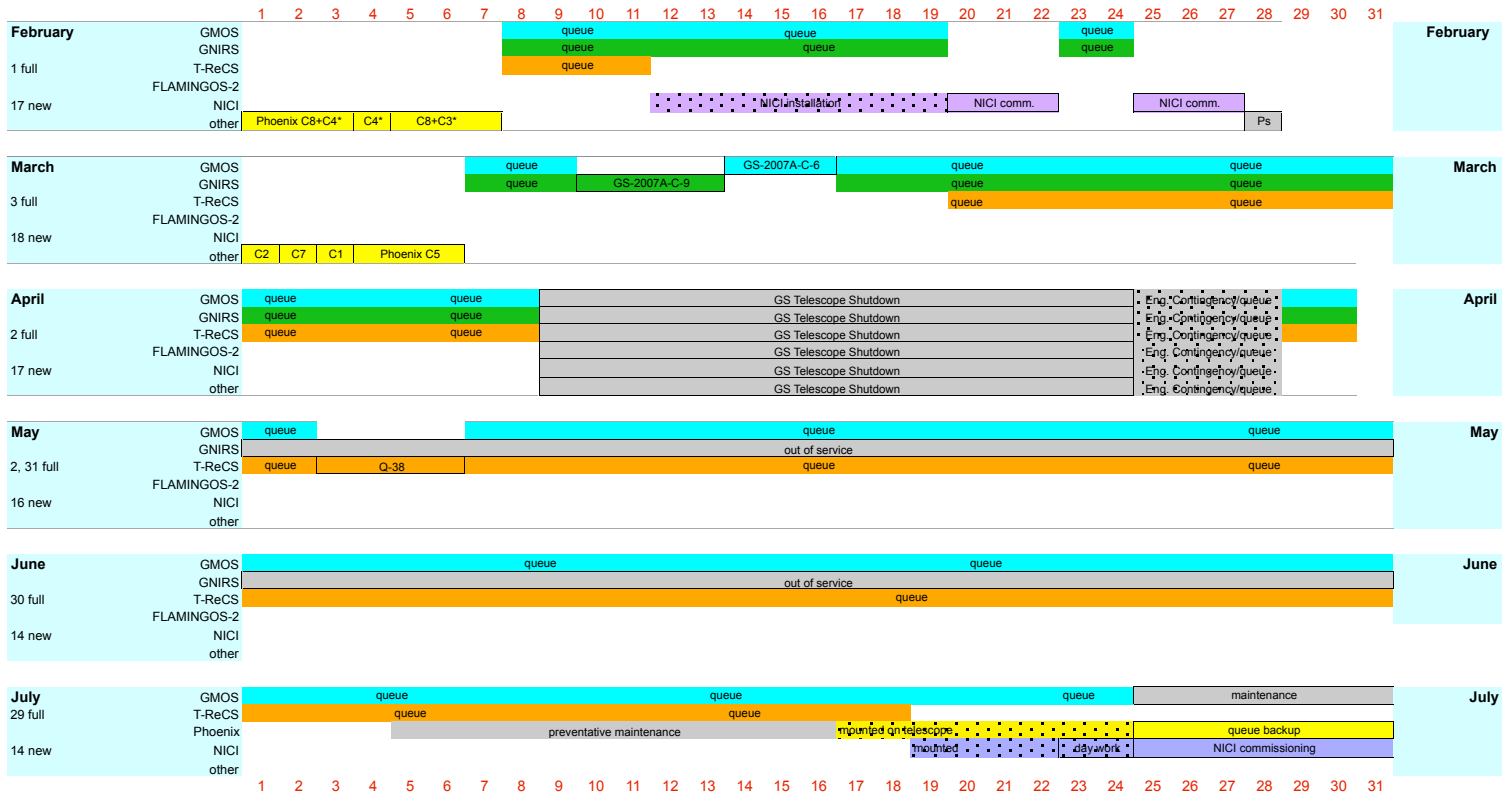


### Gemini South Semester 2007A

The semester calendar shows multi-instrument queue nights, scheduled classical runs and engineering or commissioning blocks. Instruments potentially usable on queue nights are indicated by the coloured-horizontal bands (see color key below). Note: ToO PIs should always check the "what's available now" pages that are linked from the contents list for the most up-to-date information. Scheduled classical runs are indicated by the instrument name (or an abbreviated version) and the last characters of the GS-2007A-... program ID number. Engineering or commissioning that involves one or more instruments is shown in the relevant instrument row(s). New and full moon dates are shown.



- \* Phoenix notes, Feb-Mar: Some Phoenix programs will share nights. On the nights of February 1-3, C8 will use the first 1/3 of the night, and C4 will use the latter 2/3. C4 has the entire night of February 4. Similarly the nights of February 5-7 will be shared by C8 and C3, with C8 allocated the first 1/3 of the night and C3 the latter 2/3.
- \* NICI notes: NICI commissioning and campaign science will require removal of TReCS.
- \* FLAMINGOS-2 notes: FLAMINGOS-2 commissioning will not start in 2007A.
- \* Engineering contingency nights reserved for April 25-28 will revert to queue if not needed.

Last updated 5-July-2007