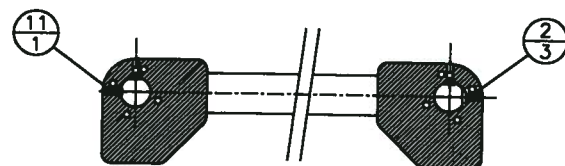


NOTES, UNLESS OTHERWISE SPECIFIED:

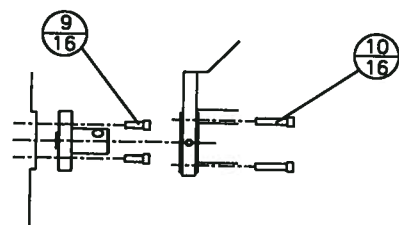


REV	DESCRIPTION	DATE	APPROVED
B	ADDED SHEETS 2,3 & 4, MASS TABLE CHANGE FOR NEW BALLAST BASEPLATE	23AUG88	
C	REVISED INTERFACE LEGS 200mm FOR TYPE 2 ASSEMBLY ADDED 100kg OF WEIGHT TO TYPE 2 ASSEMBLY	17APRIL97	

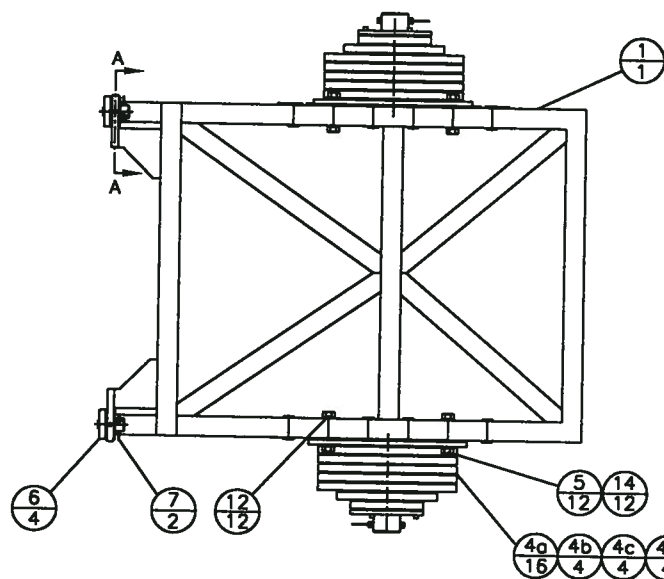
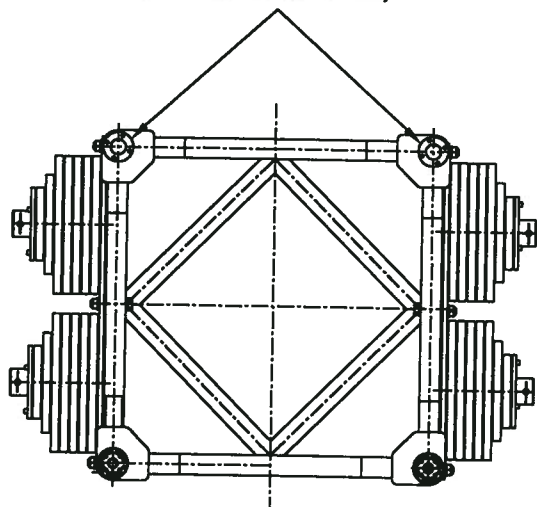
Part section on AA x2



Typ. ISS/Support structure fastener detail x2

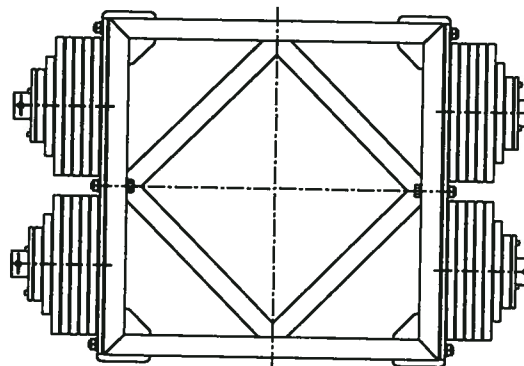
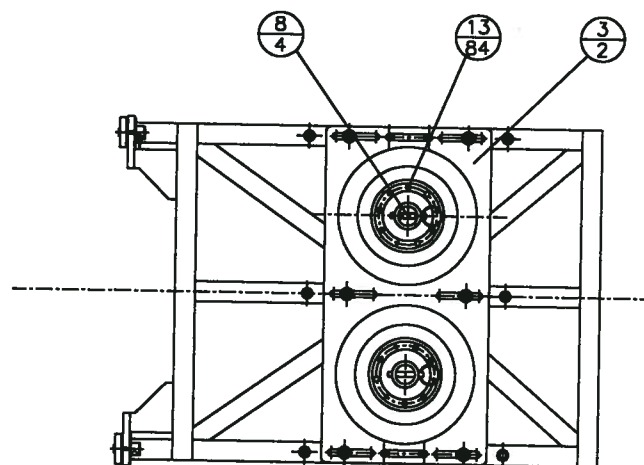


ISS locator pins removed for clarity



Item	Description	Drawing/Description
1	Ballast weight support structure	89-GP-1000-4002
2	Hardened insert	89-GP-1000-4003
3	Ballast baseplate (Type 1)	89-GP-1000-4004
4	Ballast weight	89-GP-1000-4005
5	Baseplate washer	89-GP-1000-4006
6	ISS locating pin	89-GP-1000-4007
7	Support structure retaining pin	Ø19 x 50 grip SS self locking pins
8	Ballast weight retaining pin	Ø19 x 100 grip SS self locking pins
9	ISS locating pin cap screws	M12 x 35
10	Support structure cap screws	M12 x 60
11	Support structure set screw	M12 x 30 flat point threaded
12	Baseplate mounting bolts	M24 x 170, 40 threaded
13	Ballast weight cap screws	M12 x 50
14	Baseplate Nuts	M12

a,b,c,d refer to 50,25,12.5 and 6.25Kg weights respectively, drawing 4005 sheets 1 to 4.



GEMINI PROJECT DOCUMENT  
APPROVED FOR RELEASE  
Group Manager *[Signature]* 4/17/97  
Systems *[Signature]* 4/17/97

ITEM NO.	PART OR IDENTIFYING NUMBER	NOMENCLATURE OR DESCRIPTION	PROCUREMENT SPECIFICATION	NOTES
1	89-GP-1000-4001	GEMINI 8-M Telescopes Project BALLAST WEIGHT ASSEMBLY TYPE 1		
2				
3				
4				
5				
6				
7				
8				
9				
10				
11				
12				
13				
14				
15				
16				
17				
18				
19				
20				
21				
22				
23				
24				
25				
26				
27				
28				
29				
30				
31				
32				
33				
34				
35				
36				
37				
38				
39				
40				
41				
42				
43				
44				
45				
46				
47				
48				
49				
50				
51				
52				
53				
54				
55				
56				
57				
58				
59				
60				
61				
62				
63				
64				
65				
66				
67				
68				
69				
70				
71				
72				
73				
74				
75				
76				
77				
78				
79				
80				
81				
82				
83				
84				
85				
86				
87				
88				
89				
90				
91				
92				
93				
94				
95				
96				
97				
98				
99				
100				